



## Image correction from InDesign/Quark layout

- ✓ Much faster and more reliable than changing your images manually!
- ✓ Add caption and photographer information automatically in your layout!
- ✓ Integrates with leading image enhancement engines!

**Process images directly from within Quark XPress or Adobe InDesign.**

### Fast and efficient

Colorman makes it extremely fast and easy to process images automatically. No need to leave your Quark or InDesign layout to enhance your pictures. Work with low resolutions, and improve production staff efficiency by 30%.

### Different channels

You may have as many processing channels as you need for different types of workflows/publications. Each channel may convert to your printer's own specifications, crop, resize, resample, etc..

### Color engines

Colorman has built-in support for optimization Color Processing engines: Fotoware Color Factory, Elpical Claro Premedia and Colour-Science's i2e based Q-Enhancer.

### Metadata integration

When importing a picture, Colorman can import any metadata information you require in a text box using channel preconfigured style sheets and layout.

### Layout application support

Colorman is available both for Adobe InDesign and Quark Xpress (Mac and Windows)

### Contact us: head office

Laidback Solutions AB

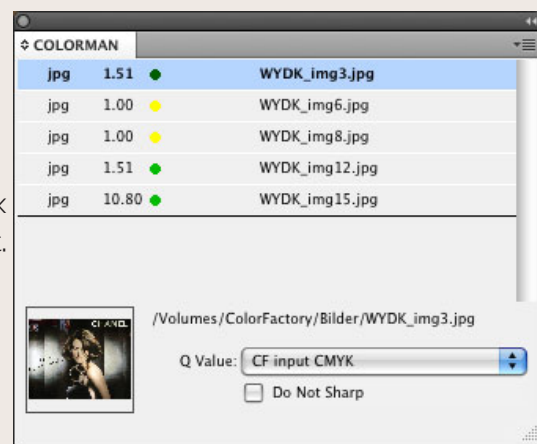
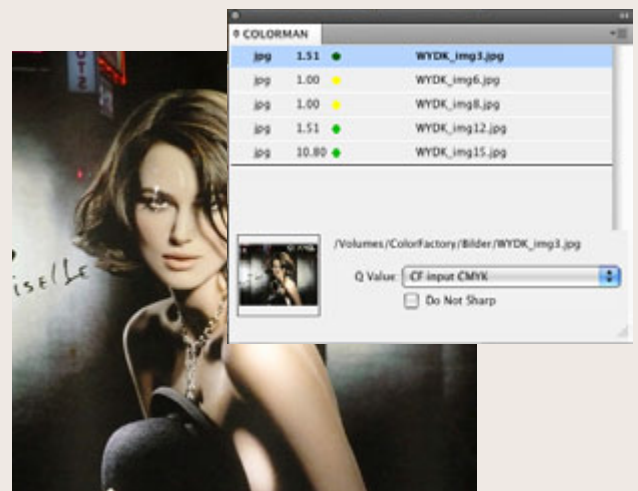
S-602 25, Norrköping, Sweden  
Tel: +46 11 12 75 80

Email: [info@laidbacksolutions.se](mailto:info@laidbacksolutions.se)



Tel: 1 (877) 544-5203  
local: (514) 544-5201

skype: phjpm\_fw  
sales@mint-na.com



# laidback

WWW.LAIDBACKSOLUTIONS.SE  
WWW.LAIDBACKSOLUTIONS.CA

## Auto-captioning in Quark/InDesign layout



IDEAL FOR CATALOGUE, ADS, BROCHURE, PRICE LISTS APPLICATIONS

- ✓ Add caption and photographer information automatically to your layout
- ✓ Palette for easy viewing of caption in the placed image!
- ✓ Create templates for different layouts! (Ads, Web pages, etc...)

### Metadata import

Colorman Caption can automatically insert any type of IPTC or XMP metadata such as photographer, byline or headline from your image to your layout into text boxes.

### Multiple textboxes possibilities

You may import one or several metadata field contents to the same or to different textboxes. The position of the dynamically generated boxes can be on either side, under or above the actual picture.

### Caption Palette

The Caption Palette lets you quickly and easily see what caption is available in the picture. Very useful when you need to amend or translate the caption.

### Static Info mix

Colorman Caption lets you add static text in the caption templates as well. For instance 'Photo by:' before you place the photographer's name.

### Style Sheets

the dynamically created textboxes will use pre-configured style sheets when they are available in your layout.

### Application Support

Colorman Caption is available for both Adobe InDesign CS3/4 and Quark XPress 8 (Mac or Windows)

**Contact us: head office**  
Laidback Solutions AB

S-602 25, Norrköping, Sweden  
Tel: +46 11 12 75 80

[info@laidbacksolutions.se](mailto:info@laidbacksolutions.se)



Tel: 1 (877) 544-5203  
local: (514) 544-5201

skype: phjpm\_fw  
[sales@mint-na.com](mailto:sales@mint-na.com)



Caption Palette that quickly displays the XMP metadata information for the Caption in an editable box